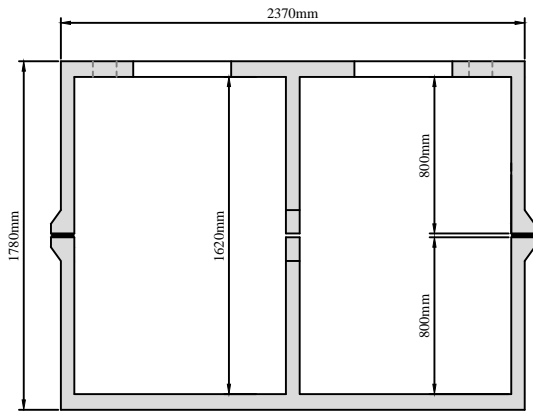
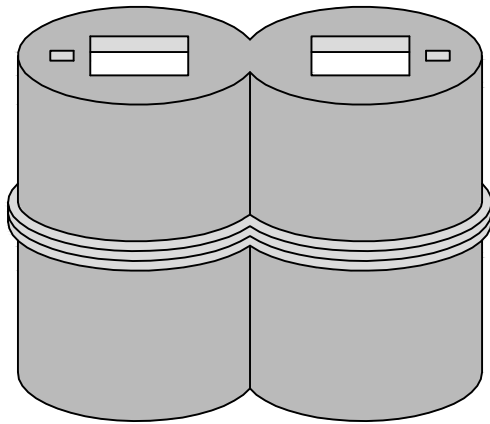
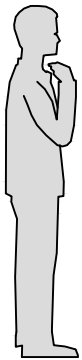
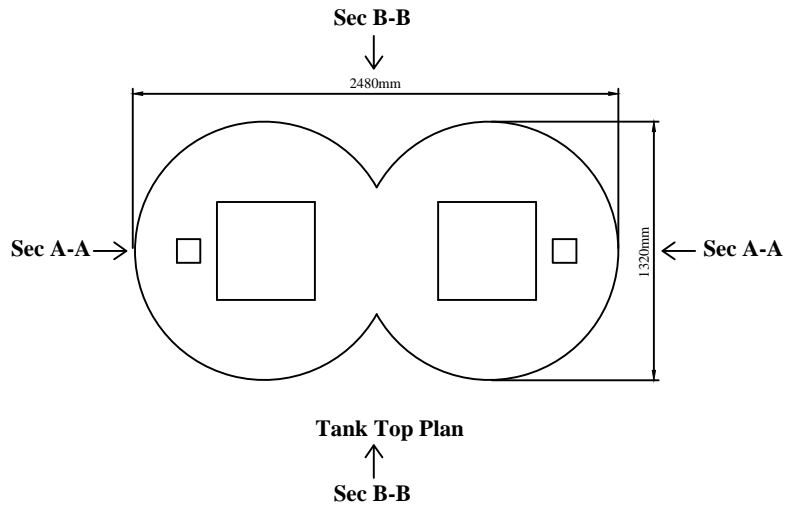
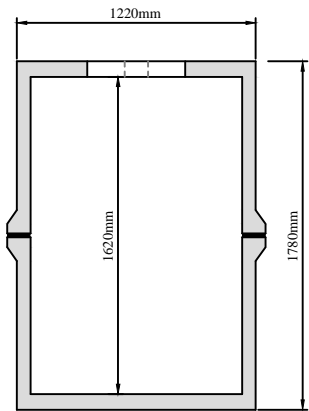


Fig. 8 Tank



**Tank Vertical Section
(Through Section A-A)**



**Tank Vertical Section
(Through Section B-B)**

Notes:

This drawing is ©. All rights reserved.

Note: Observe all safety regulations in regard to excavation and lifting requirements. Never leave opening uncovered or unattended at any time.

Note: Specify any specific requirements prior to ordering. All civil works by customer.

Note: Do not scale from this drawing. Only for illustration purposes.

Tank Type: Fig. 8 Tank

Tank Size: 2470mm x 1320mm (Overall)

Height: 1780mm

Volume: 3600 liters

Weight: 3000kg (Ex. Lid)

(Tank Dim: ± 20mm. Weight: ± 30Kg.)



Clara Road, Tullamore, Co. Offaly, Ireland
Tel: 057 9326000 info@molloyprecast.com
Fax: 057 9326060 www.molloyprecast.com

Title: Fig. 8 Tank ISO

Date: June 2012

Drng. No.: ISO-FIG8-00

Drawn By: SC